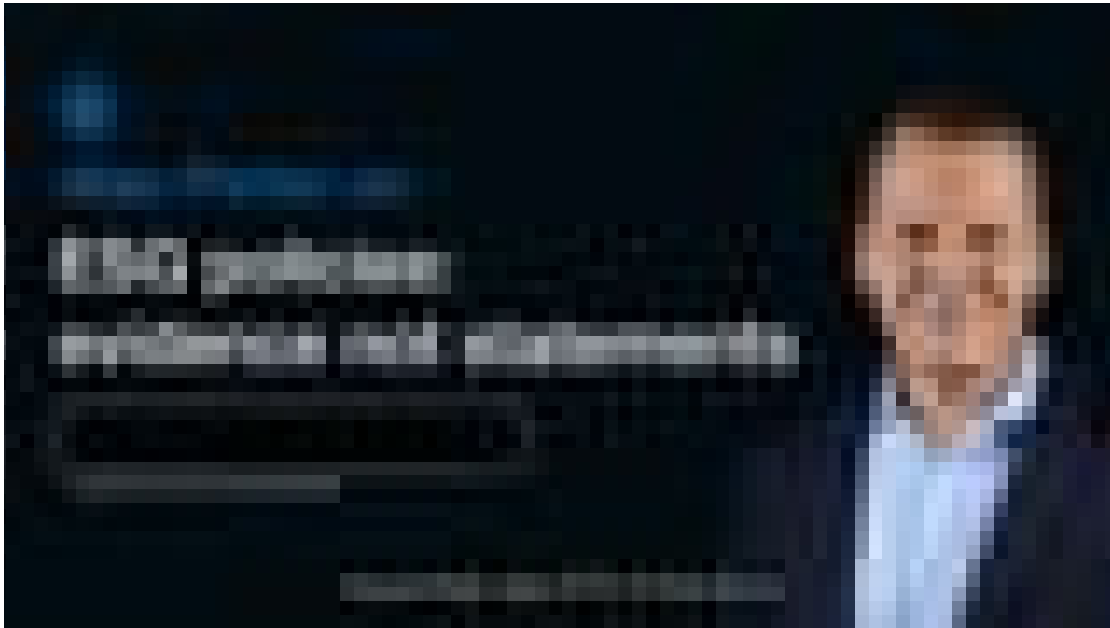


Alan Porter wants evidence, not statements

Alan Porter goes into detail on why he prefers evidence over statements unlike most other Asset Management companies.

Do most asset management firms have an exit strategy to respond to negative ESG performance? Fund Manager, Alan Porter, sheds light on this in the clip below.



Fund Risks

This video is intended for guidance only. All investment views are presented for information only and are not a personal recommendation to buy or sell. **Past performance is not a reliable indicator of future returns.** Forecasts are not guaranteed and should not be relied upon. The value of investments and any income from them can fall and you may get back less than you invested.